

# Einstein's Puzzle - Who owns the pet fish?

It is said that Einstein created a puzzle that only 2% of the population could solve. This is a slightly updated version. Do you think you can solve this puzzle?

There are 5 houses in a row:



Each house is a specific colour:



Green



Red



Purple

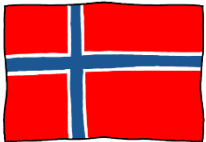


Blue



Yellow

The owners of each house are of a certain nationality:



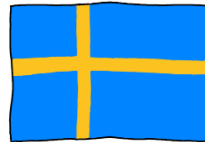
Norwegian



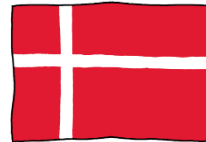
British



German



Swedish



Danish

They each drink a certain type of beverage:



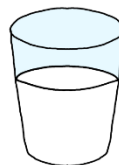
Coffee



Orange Juice



Tea



Milk



Water

They each favour a particular brand of clothing:



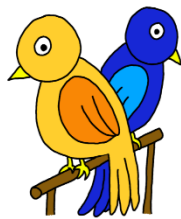
next



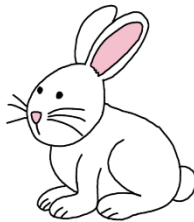
They each own a pet:



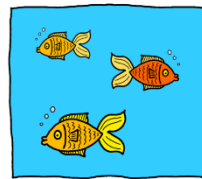
Dog



Birds



Rabbit



Fish



Cat

None of the owners have or like the same things. From the clues below can you work out who owns the pet fish?

- The Brit live in the red house.
- The Swede keeps dogs as pets.
- The Dane drinks tea.
- Looking from in front, the green house is just to the left of the purple house.
- The green house's owner drinks coffee.
- The person who wears Nike raises birds.
- The owner of the yellow house wears Adidas.
- The person living in the middle house drinks milk.
- The Norwegian lives in the leftmost house.
- The person who wears Next lives next to the one who keeps cats.
- The person who keeps a horse lives next to the person who wears Adidas.
- The person who wears Levi's also drinks orange juice.
- The German wears North Face.
- The Norwegian lives next to the blue house.
- The person who wears Next has a neighbour who drinks water.

**Who owns the pet fish?**